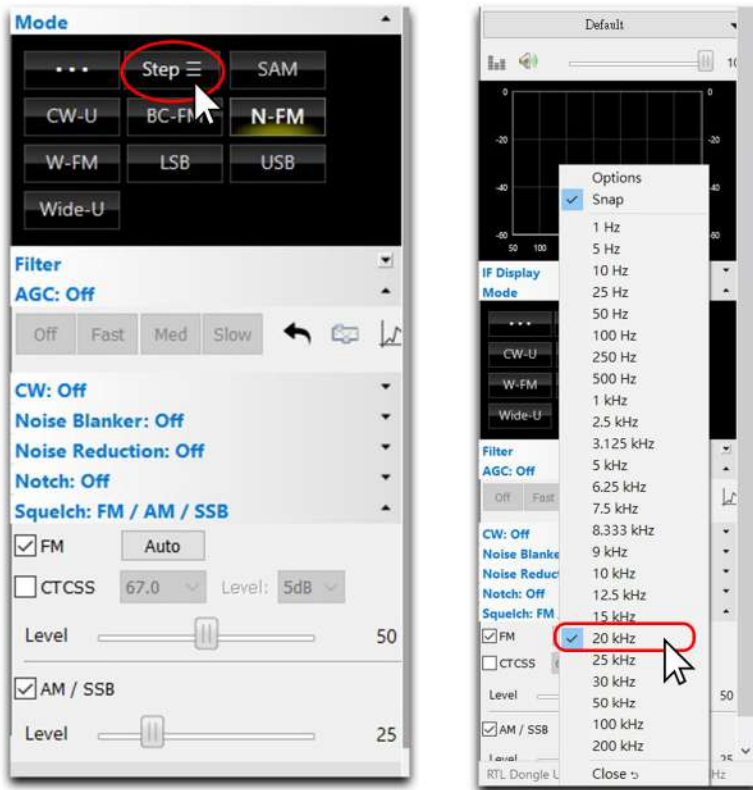
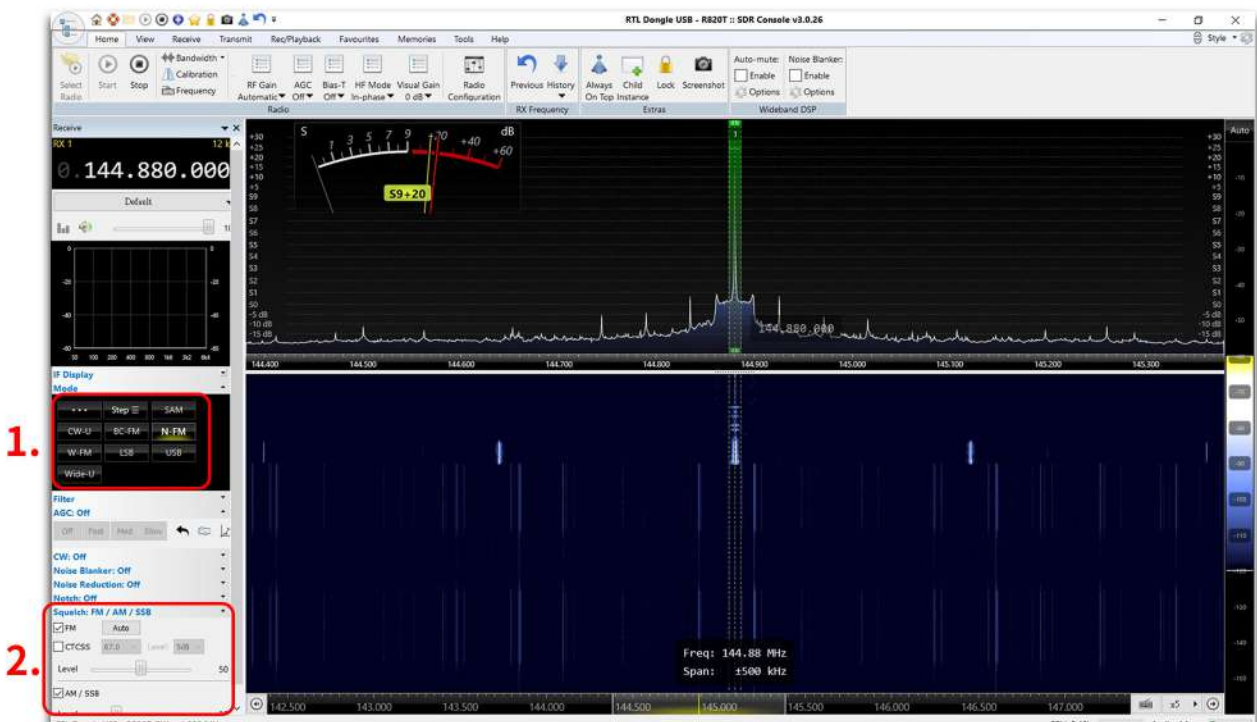


# SDRConsole (V3) 軟體操作示範

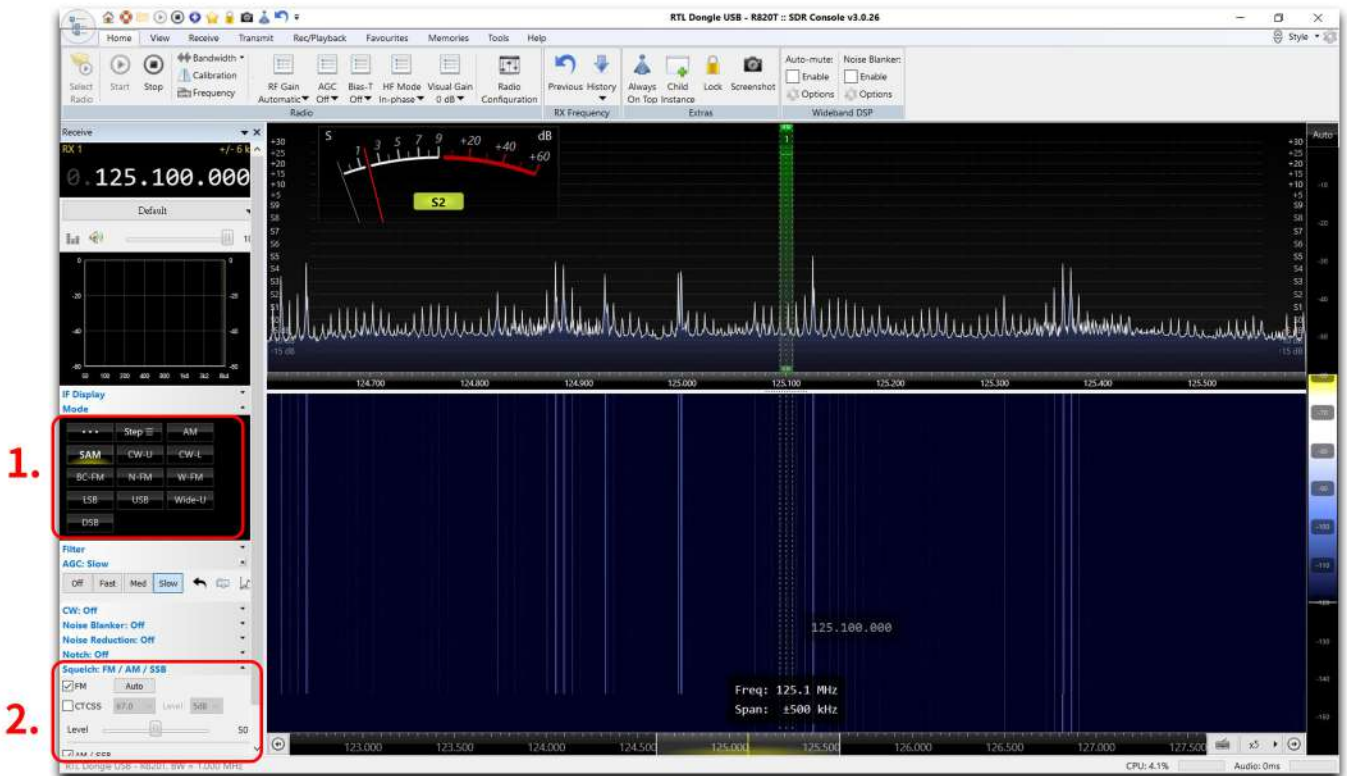
點擊左側欄位“Step” > 可調整間隔頻率



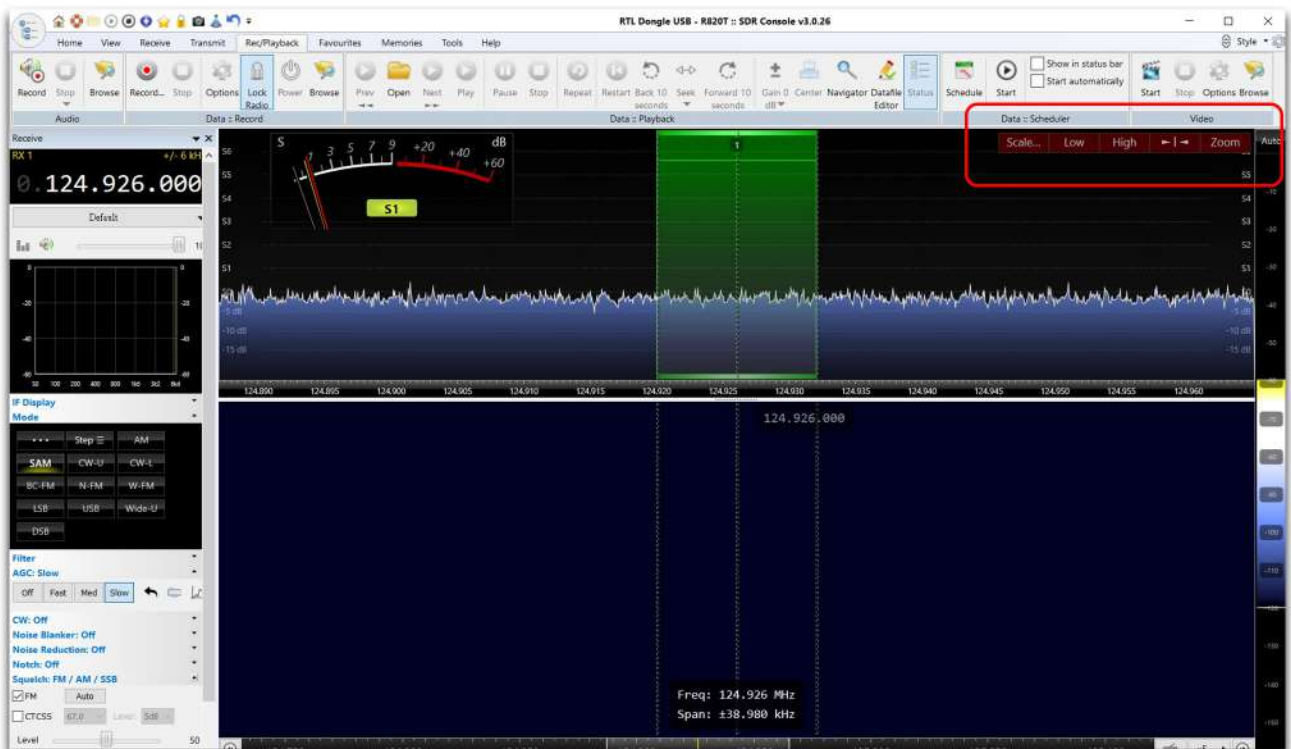
1. 選擇正確的調變模式 2. 選擇靜音的位準



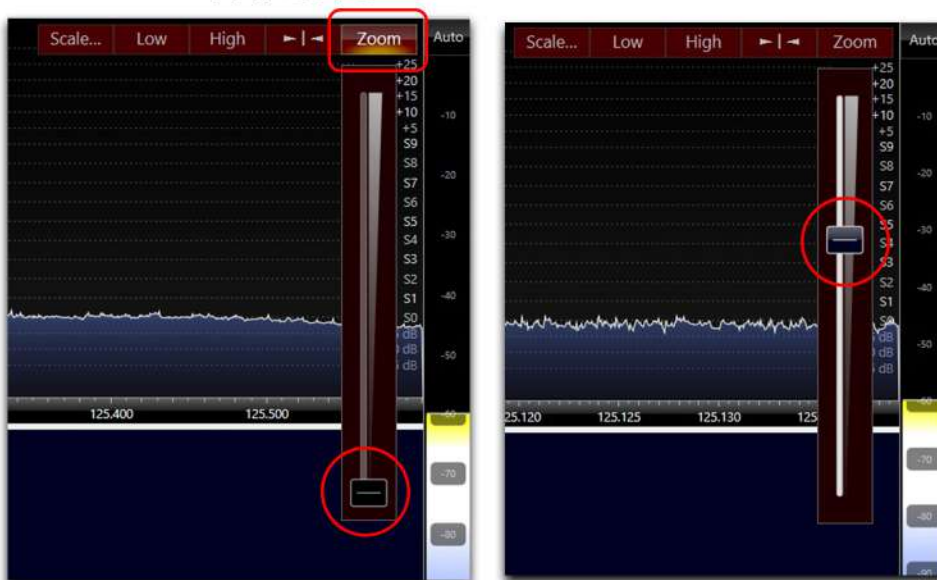
# 1. 選擇正確的調變模式 2. 選擇靜音的位準



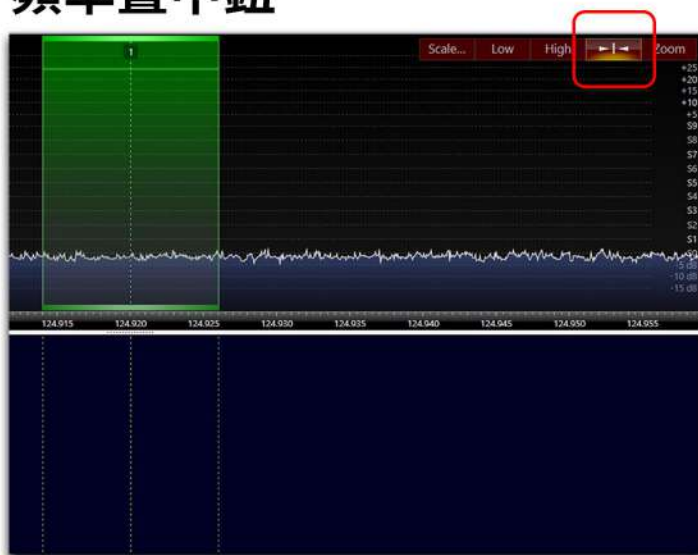
## 右上方功能鍵示範



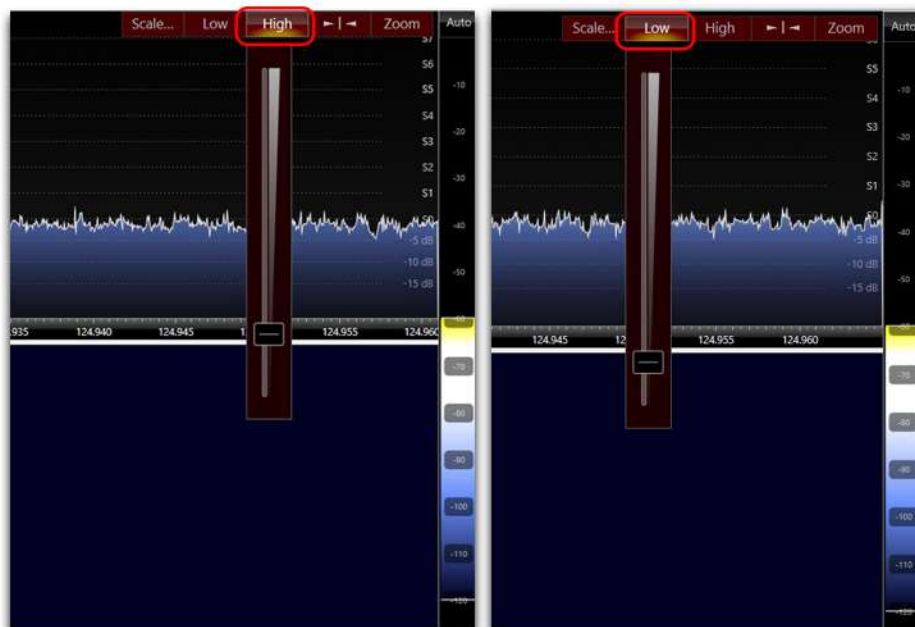
## Zoom > 頻寬調整



## 頻率置中鈕

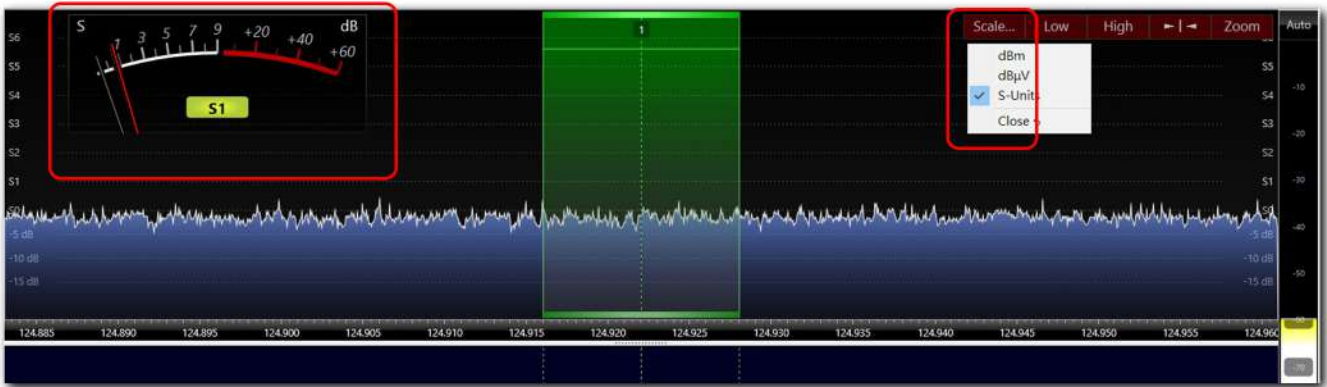


## High Low > 高低位準調整





## Scale > S表顯示選擇



## 軟體錄影功能

< 若此功能有亮起即可錄影；若無亮起表示顯示卡效能不足 >

點擊 "Rec/Playback" > 點擊 "Start"

The image shows a screenshot of the SDR software interface. A red box labeled '1.' highlights the 'Rec/Playback' button in the top menu bar. Another red box labeled '2.' highlights the 'Start' button in the bottom right corner of the interface. The main display area shows a signal spectrum with a frequency range from 124.885 to 124.960 MHz. A green vertical bar is visible in the center of the spectrum. The status bar at the bottom shows 'Freq: 124.922 MHz' and 'Span: ±38.980 kHz'. The system tray at the bottom right shows 'CPU: 2.2%' and 'Audio: 0ms'.

# HF部份需注意

本產品HF部份 100K-30MHz 執行時要加100MHz

例如：  
7.050MHz => 107.050MHz  
14.270MHz => 114.270MHz

