

SDR-N300U SDRConsole(V3) 軟體安裝示範

< 安裝前請先將SDR-N300U透過USB連接線接上電腦 >

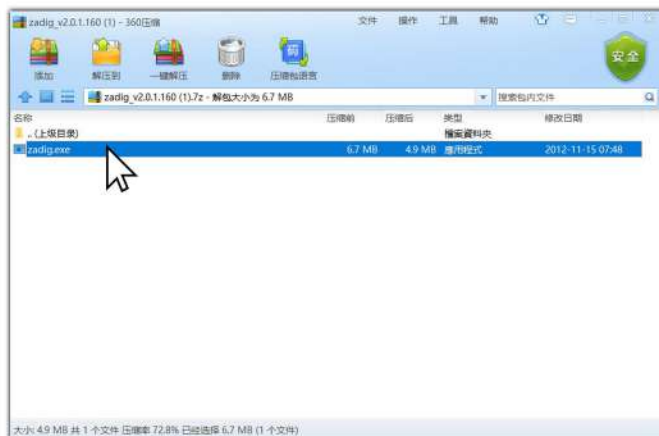
Step 1.

開啟 SDR-N300U 官網介紹頁面 > 點擊下載“RTL驅動下載”



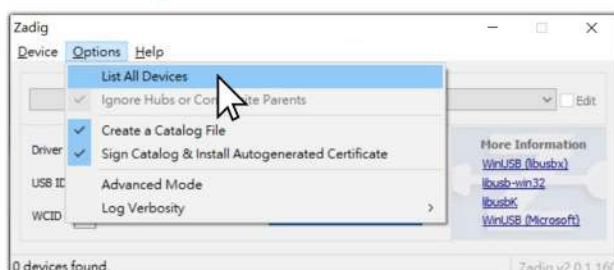
Step 2.

開啟 Szadig_v2.0.1.160壓縮檔 > 點擊“zadig.exe”



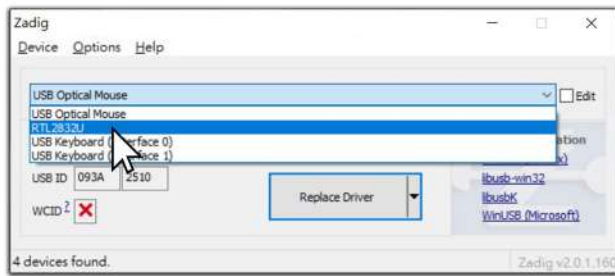
Step 3.

點擊“Options” > 點擊“List All Devices”



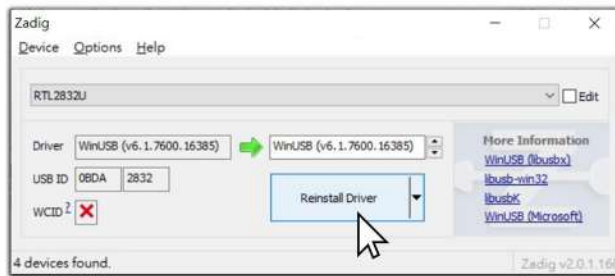
Step 4.

點擊“USB Optical” > 點擊“RTL2832U”



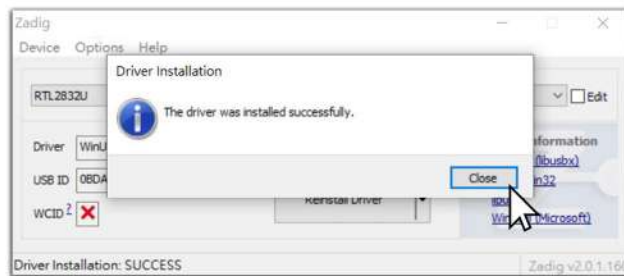
Step 5.

點擊“Reinstall Driver”



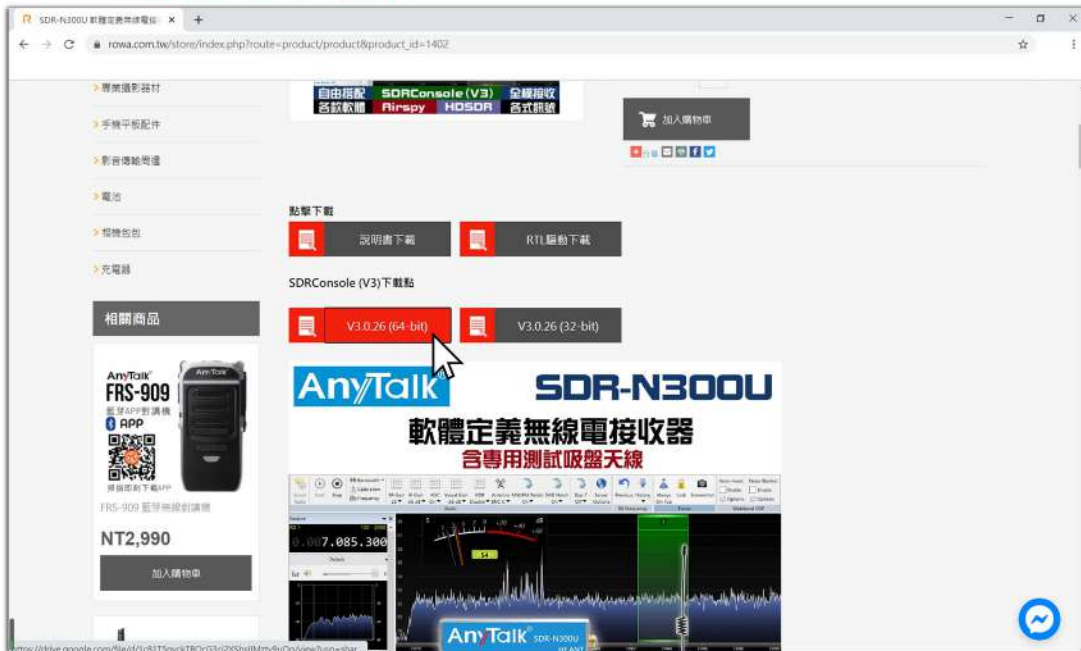
Step 6.

Zadig 安裝完成點擊“Close”



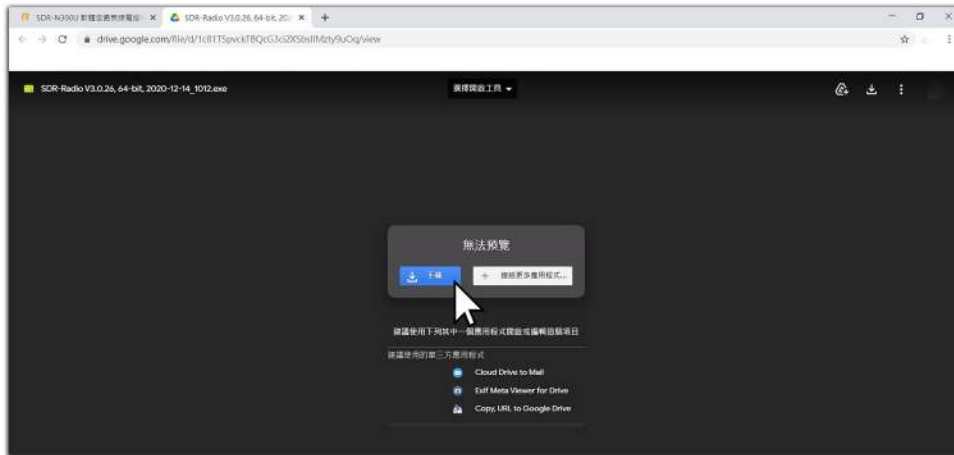
Step 7.

開啟 SDR-N300U 官網介紹頁面 > SDRConsole 下載點 > 點擊“V3.0.26(64-bit)”



Step 8.

點擊“下載”



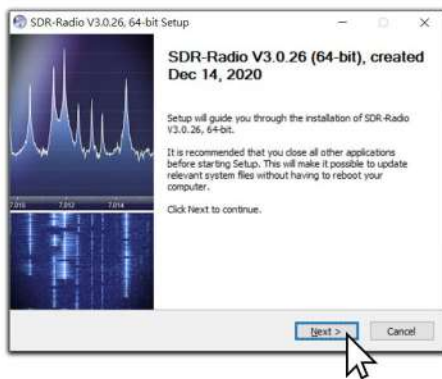
Step 9.

點擊“SDR-Radio V3.0.26,64-bit.exe”



Step 10.

點擊“Next”



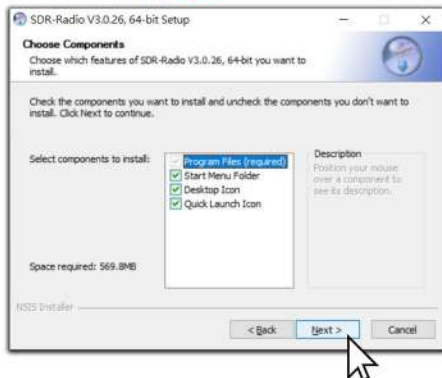
Step 11.

點擊“I Agree”



Step 12.

點擊“Next”



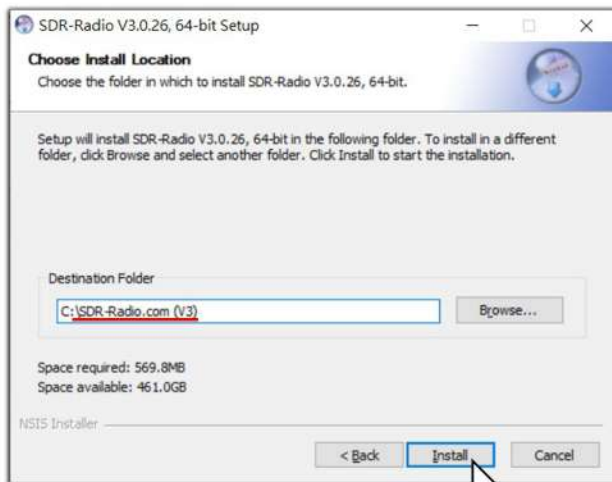
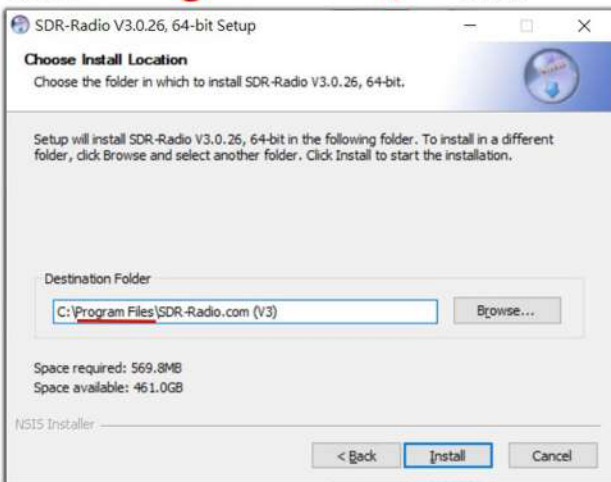
Step 13.

點擊“Next”



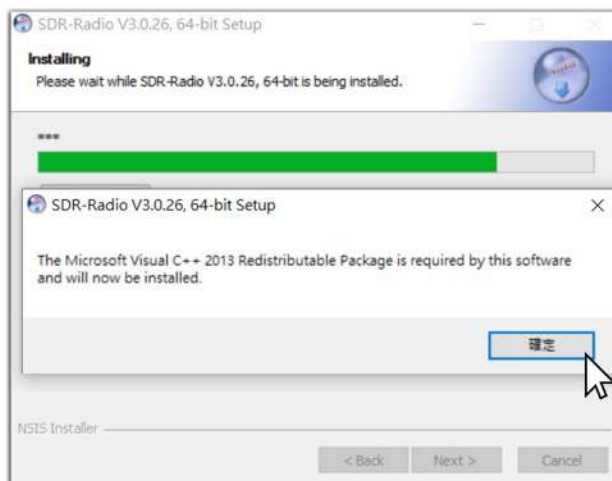
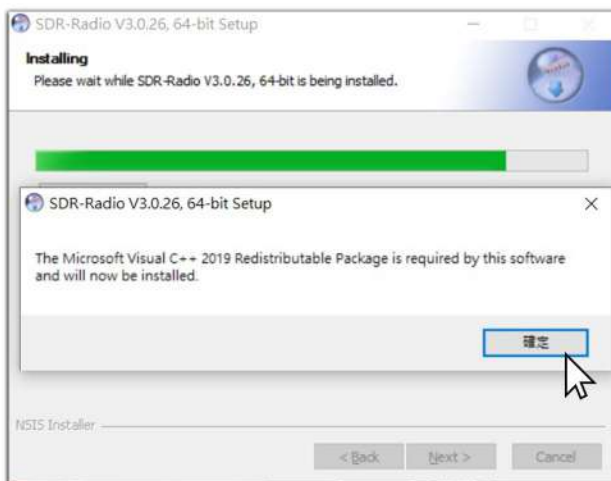
Step 14.

刪除“Program Files\” > 點擊“Install”



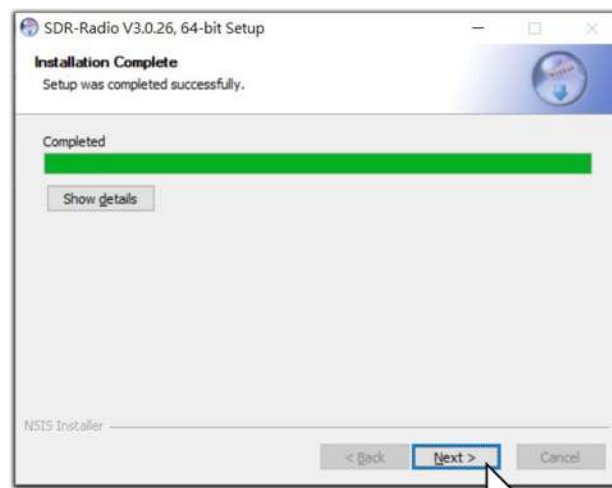
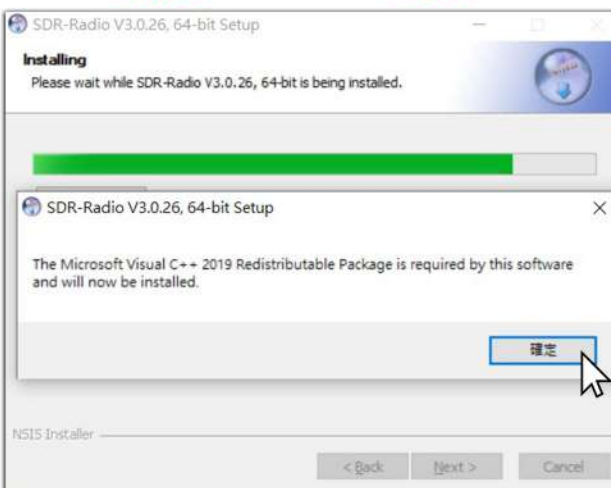
Step 15.

點擊“確定” > 點擊“確定”



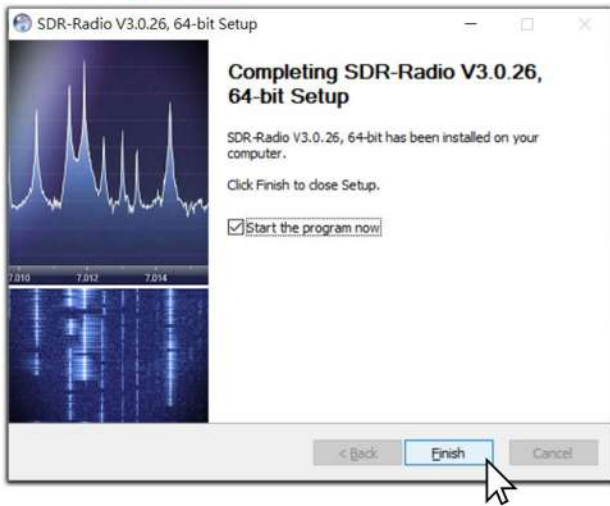
Step 16.

點擊“確定” > 點擊“Next”

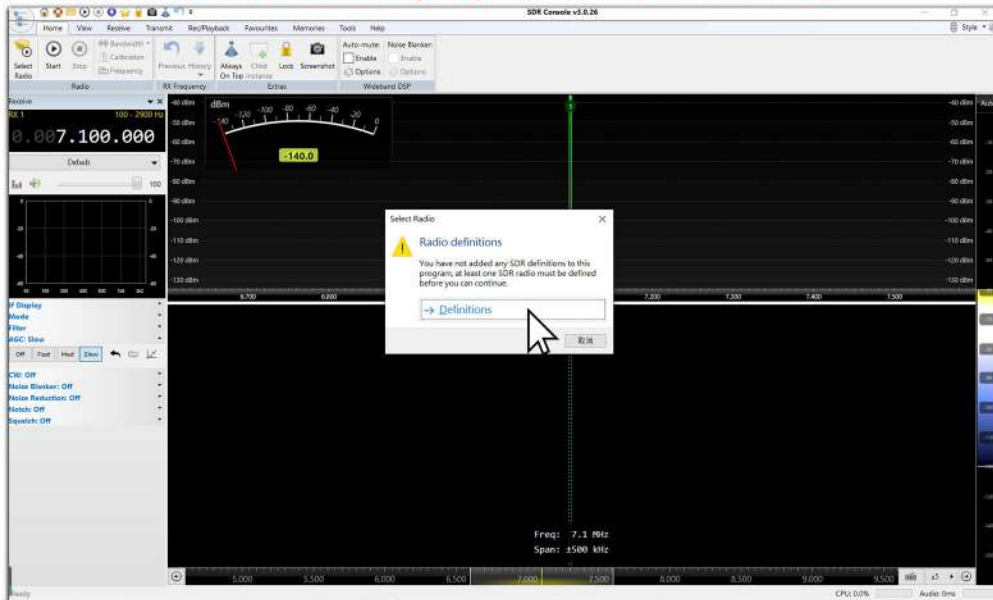


Step 16.

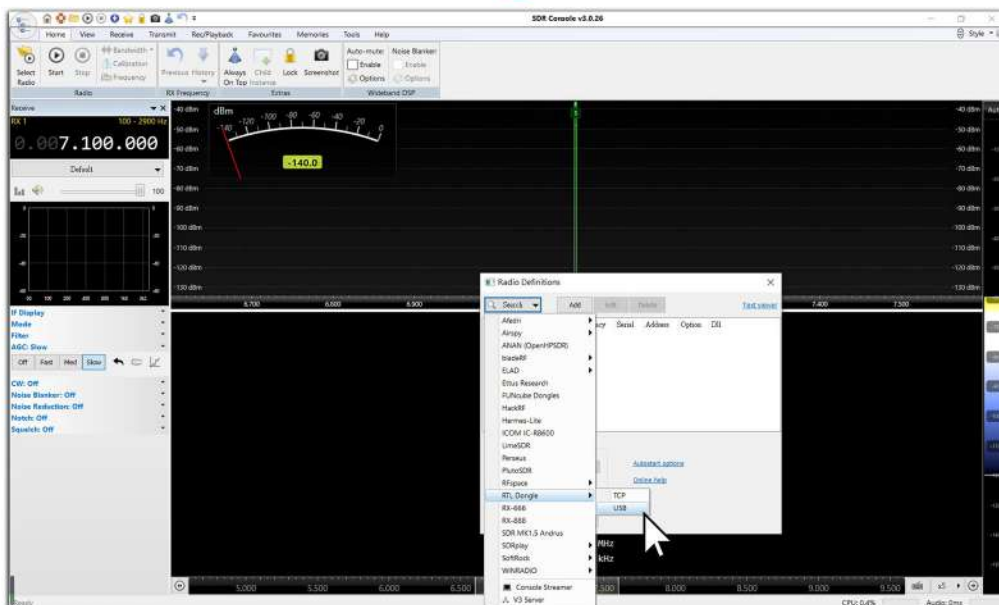
點擊“Finish” > 軟體安裝完成



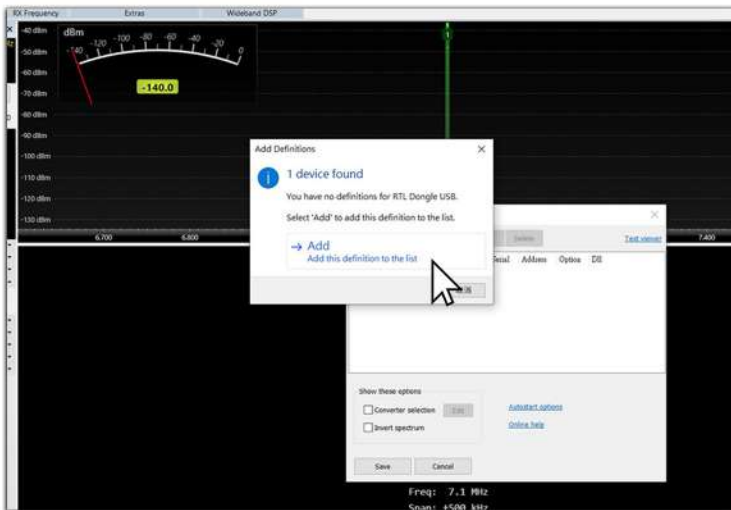
自動開啟SDRConsole (V3) > 點擊“Definitions”



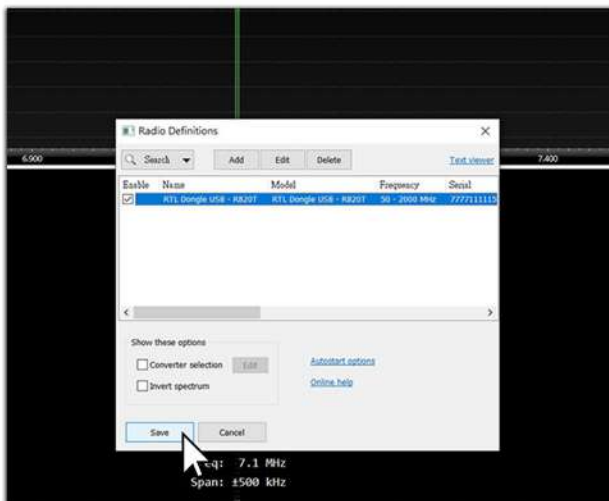
點擊“Search” > “RTL Dongle” > “USB”



點擊“Add”



勾選“RTL Dongle USB-R820T” > 點擊“Save”



點擊“Start”

