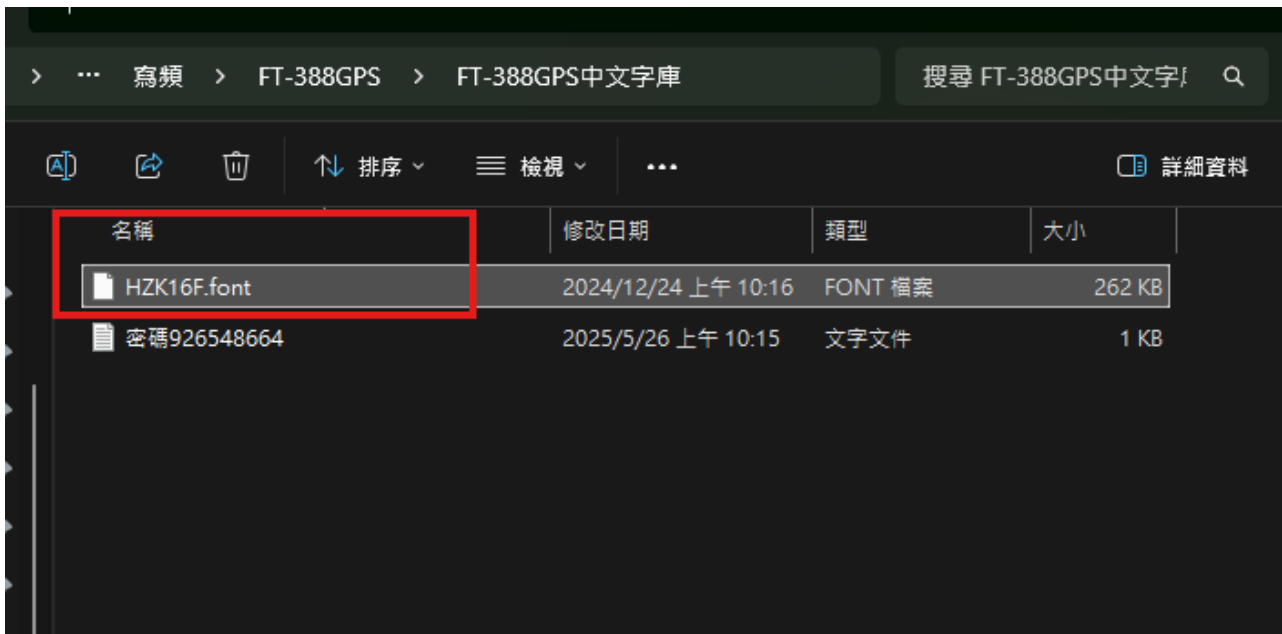


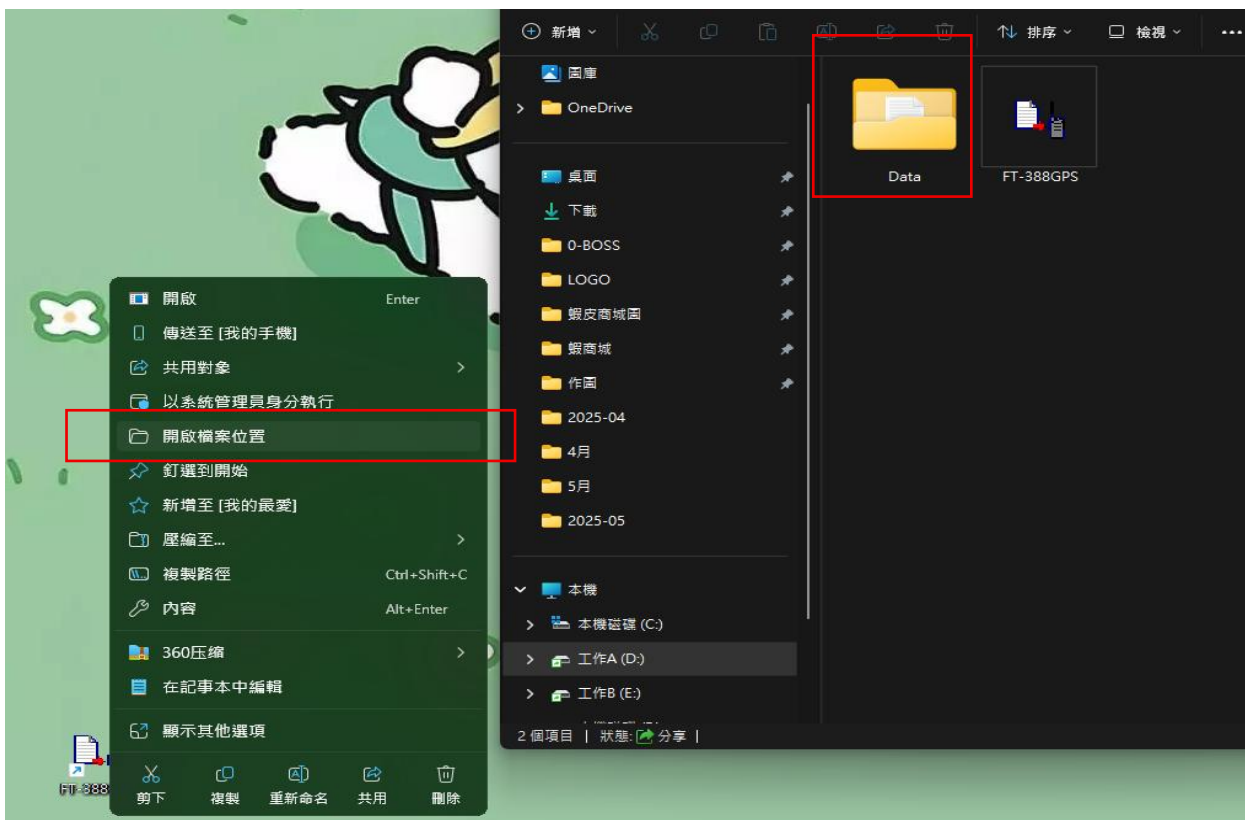
FT-388GPS 中文字庫操作步驟

※※對講機若無出現亂碼則不須設定※※

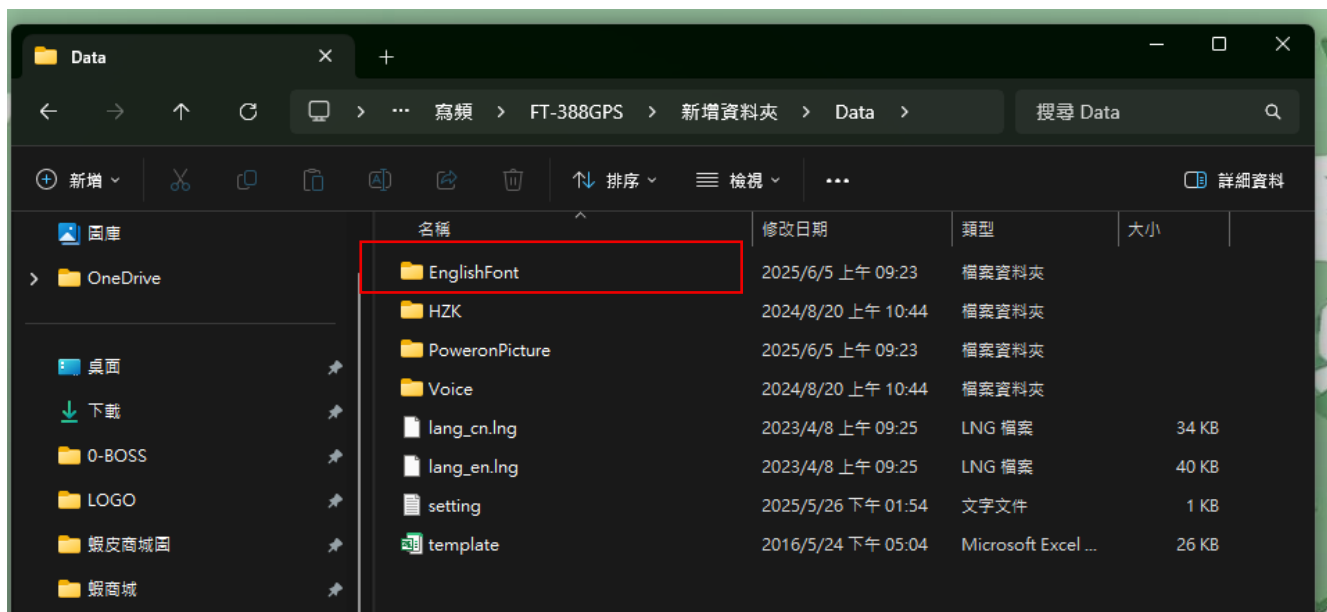
1. 將下載的【FT-388GPS 中文字庫】解壓縮，複製【HZK16F.font】



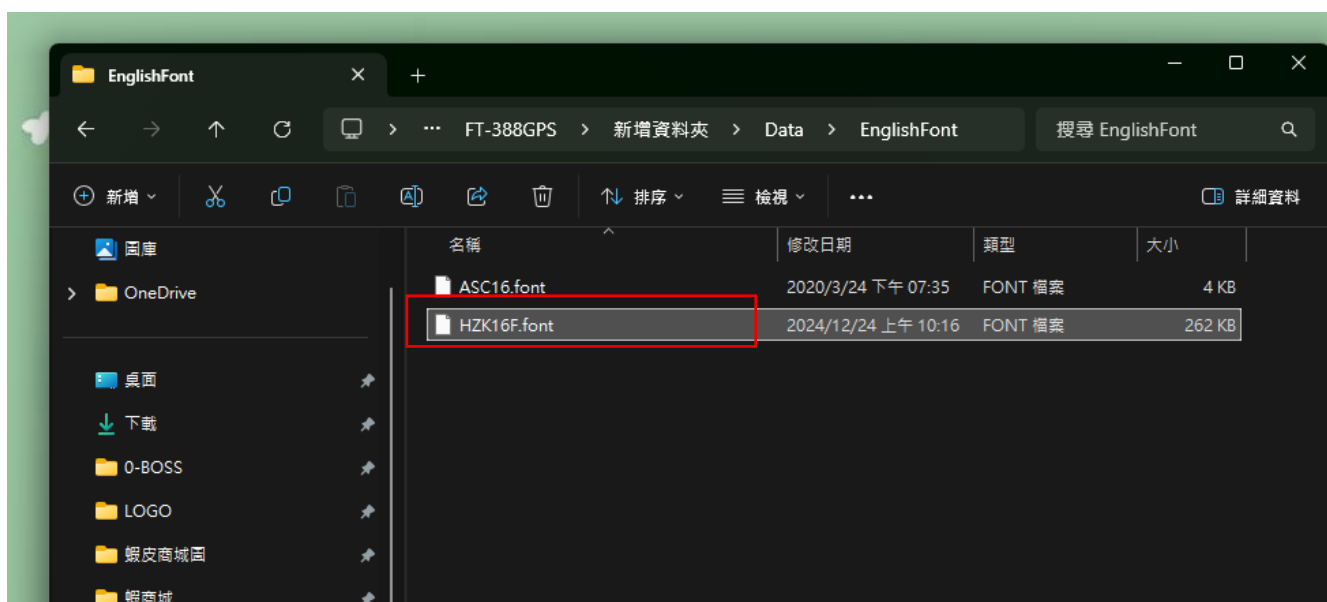
2. 安裝 FT-388GPS 寫頻軟體 > 安裝完成會在桌面上自動建立捷徑 > 請在 FT-388GPS 寫頻軟體按右鍵【開啟檔案位置】> 找到 FT-388GPS 寫頻軟體安裝位置的資料夾中【Data 資料夾】



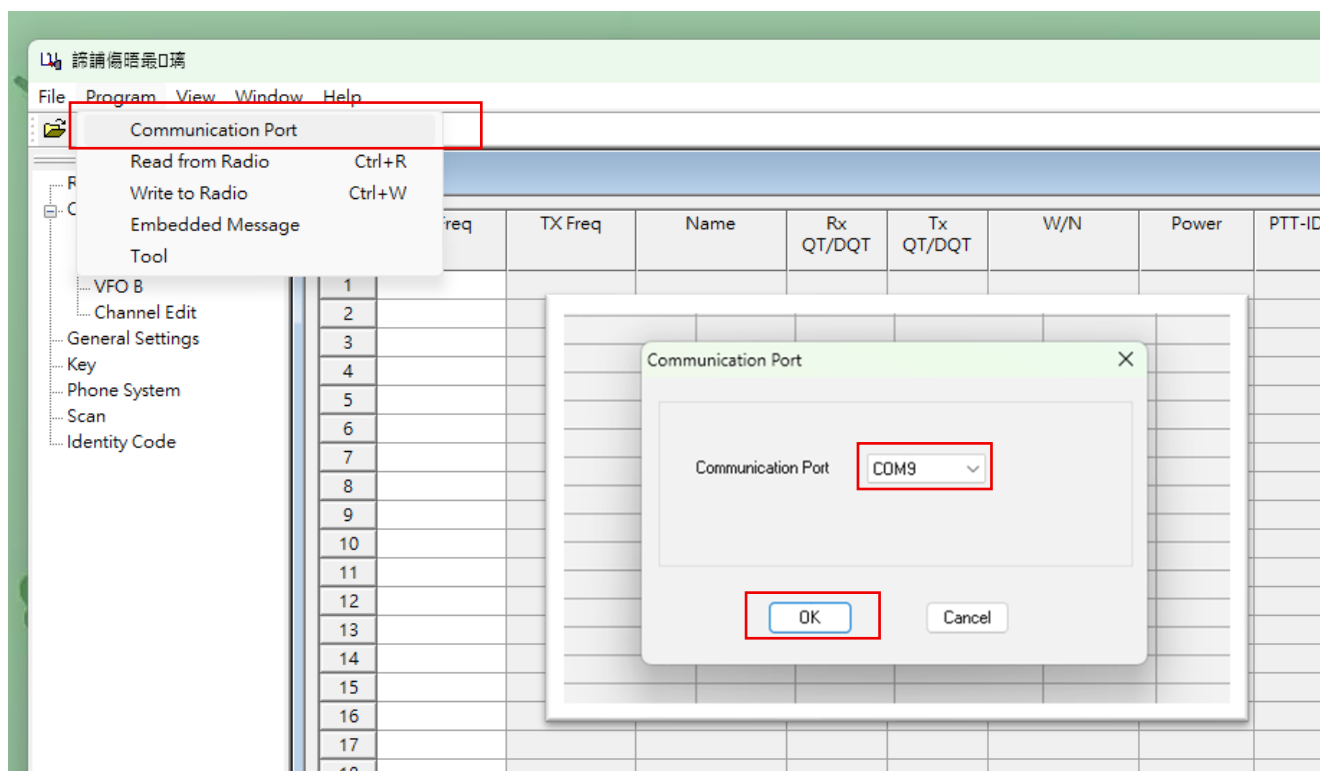
3. 打開【Data 資料夾】> 進入【EnglishFont 資料夾】



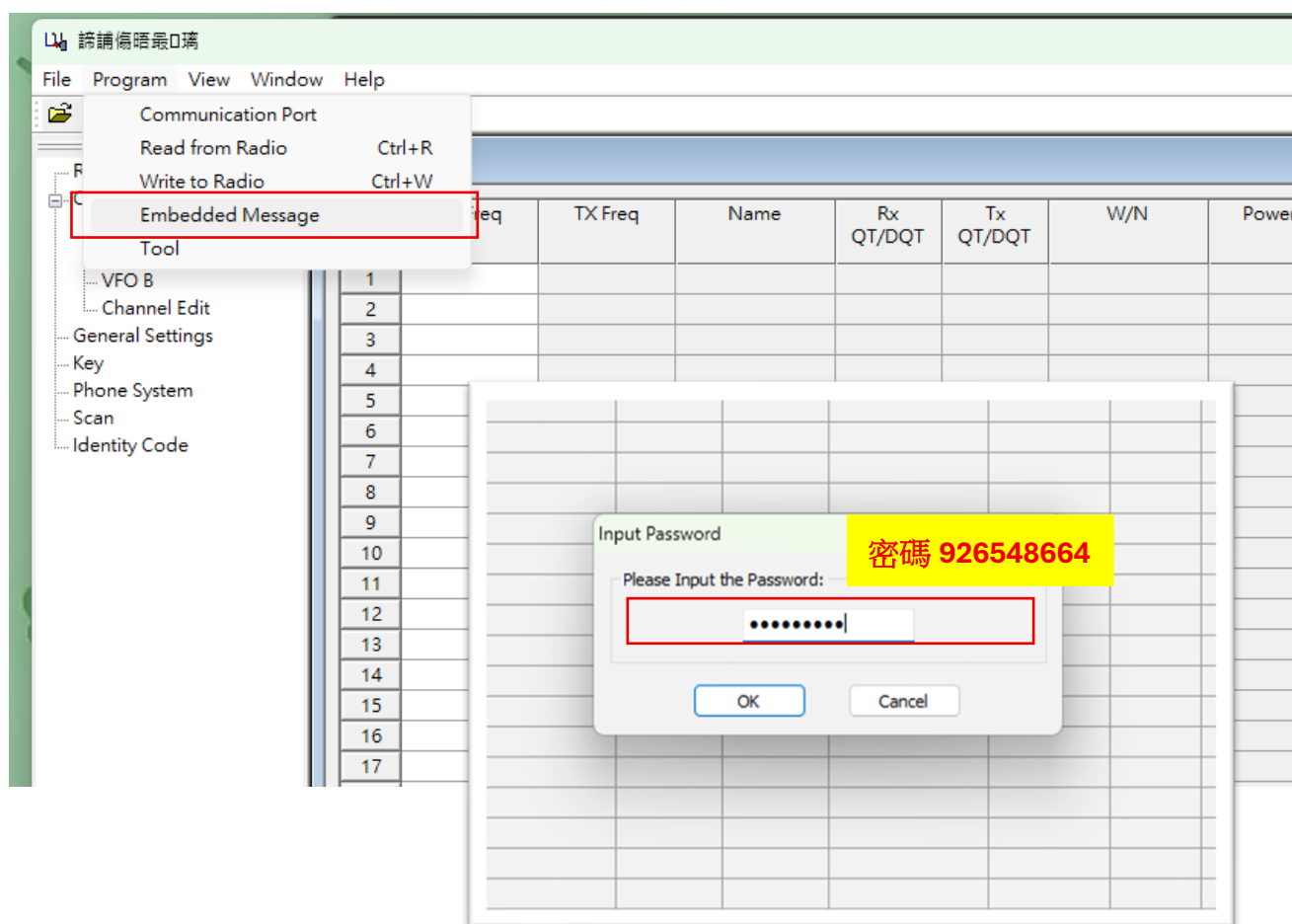
4. 將剛剛複製的【HZK16F.font】貼上 ※※寫頻軟體需要在貼完字庫後才能開啟※※



5. 開啟寫頻軟體 > 找到合適的 COM 孔 (每台電腦皆不同需自行確認 COM 孔)



6. 進入【Embedded Message】密碼 926548664



7. English Font 選擇【HZK16F】及 下圖中須勾選的部分

The screenshot shows a configuration window with the following sections:

- Radio Information:** Model Number (UV8F-000000-V1), Serial Number (12345678), Seller (ABC).
- Firmware:** Firmware Version (V1.00.00), Volume Knob (Nonlinearity), OLED (ST7735S), Firmware Code (0001-01-0001).
- Functional:** Language (Chinese & English), ☐ Designed CPS, Voice (Voice), Font (Radio), English Font (HZK16F), Power on Picture (None).
- Functional Exist:** Signaling Type (2 Tone, 5 Tone, QDC1200), Encrypt (Basic Encrypt, Full Encrypt 1, Full Encrypt 2), Other (Vibration, Bluetooth, Record, Man Down, GPS, Roam).
- Functional State:** Signaling Type (2 Tone, 5 Tone, QDC1200), Encrypt (Basic Encrypt, Full Encrypt 1, Full Encrypt 2), Other (Vibration, Bluetooth, Record, Man Down, GPS, Test Mode).
- Write:** ☒ Embedded, ☐ Firmware, ☐ Voice, ☒ Font, ☒ English Font, ☐ Power on Picture, ☐ Freq Hopping Code, Freq Hopping, Default.
- Buttons:** Write, Read, Write, Cancel.

確認字庫與需勾選的部分皆有設定

即可寫入至對講機